

Hosting delivered with passion and expertise

Introducing a service-focussed
Cloud hosting **partner**

Peering Policy

Copyright © 2021 FyfeWeb Ltd. All Rights Reserved.

NOT PROTECTIVELY MARKED

© Copyright FyfeWeb Ltd. 2021. All Rights Reserved.

support@fyfeweb.com

www.fyfeweb.com



Copyright © 2021 FyfeWeb Ltd. All Rights Reserved

The information contained in this document is the property of FyfeWeb Ltd

The contents of this document must not be reproduced or disclosed wholly or in part or used for purposes other than that for which it is supplied without the prior written permission of FyfeWeb Limited.

This document, or any information contained within it, must not be provided or issued to any third party without the prior written consent of FyfeWeb Ltd.

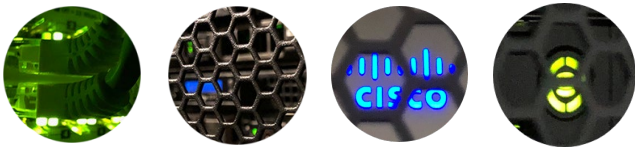
Company Number: 12162548

Registered Address:

FyfeWeb Ltd.
44, Ashfield Park,
Whickham,
Newcastle upon Tyne
NE16 4SQ

www.fyfeweb.com

NOT PROTECTIVELY MARKED



DOCUMENT CONTROL

DOCUMENT TITLE:	PEERING POLICY
DOCUMENT NAME:	PEERING-POLICY.DOCX
DOCUMENT CLASSIFICATION:	NOT PROTECTIVELY MARKED
DOCUMENT TYPE:	COMPANY POLICY
DOCUMENT LOCATION:	[REDACTED]
DOCUMENT OWNER:	CONNOR MCDONALD
DOCUMENT VERSION:	1.1
CREATION DATE:	2020-11-29
REVIEW DATE:	2021-10-29

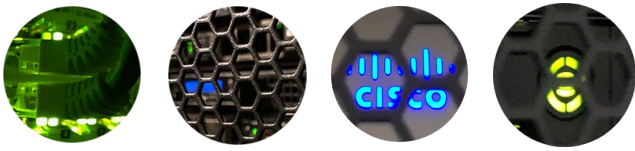
REVISION HISTORY

DATE	VERSION NUMBER	AUTHOR / AMENDED BY	DESCRIPTION OF AMENDMENTS
2020-11-07	1.0	C MCDONALD	REVIEWED AND UPDATED
2021-07-18	1.1	C MCDONALD	UPDATES TO DOCUMENT CONTROL

DISTRIBUTION

NAME	ROLE	CONTACT NUMBER(S)
PUBLIC	N/A	N/A
FYFEWEB STAFF	VARIOUS	0330 229 1659

NOT PROTECTIVELY MARKED



POLICY SYNOPSIS

FyfeWeb maintains a Selective Peering Policy (“Peering Policy”) and the majority of the time, we welcome peering requests. Peering is subject to certain requirements and terms which have been prescribed by us. This policy outlines the guidelines we use when evaluating such a request. These requirements and terms include aspects from a commercial, technical and legal perspective. We do not require a signed agreement each and every time, but we will do so where signing an Agreement is reasonable or is required. References may be made to or about any individual - including any natural person, corporation or unincorporated entity or company (whether or not having a separate legal personality) and that person’s representatives, successors or permitted assigns.

References in this Agreement may be made to or about a Company, which includes any company, corporation or other corporate body, wherever and however incorporated or established. Unless the context requires a different interpretation: (a) words denoting the singular includes the plural and vice versa; (b) references to sub-clauses, clauses, schedules or appendices are to sub-clauses, clauses, schedules or appendices of this Agreement; (c) a reference to a person includes firms, companies, government entities, trusts and partnerships; (d) the term ‘including’, ‘in particular, or any similar expression shall be construed as illustrative and shall not limit the sense of the words preceding such terms and does not exclude anything not listed; (e) “including” is understood to mean “including without limitation”; (f) reference to any statutory provision includes any and all modifications or amendments of it; (g) a reference to one gender shall include a reference to the other genders; (h) the headings and sub-headings do not form part of this Agreement.

1.0 - REQUIREMENTS

- Routable ASN
- A Network Operations Centre, whom are both operational and contactable 24x7x365
- All peering shall be settlement-free
- The requesting party must have a current and complete peeringdb.com entry
- The ability to exchange at least 1Gbit/s of IP traffic
- When notified of a peering or traffic issue, the peer must escalate immediately to a senior engineer and provide timely resolution.
- The peer shall report any network maintenance issues that may affect our BGP session and traffic exchanges
- Neither Party shall establish a route of last resort directed towards the other Party's Network
- The peer must present the same route announcements on all sessions

2.0 - REFUSAL

FyfeWeb reserves the sole and absolute right to refuse peering with any party at any time

3.0 - TERMINATION

FyfeWeb reserves the sole right to terminate any Peering or Peering Agreements at any time.

4.0 - CONTACT

For peering support or enquiries, please email peering@fyfeweb.com or call us on 0330 229 1659

NOT PROTECTIVELY MARKED